



# REOPENING THE CONNECTICUT TECHNICAL EDUCATION AND CAREER SYSTEM

## A GUIDE TO THE 2020-21 SCHOOL YEAR

# TABLE OF CONTENTS

## **01 INTRODUCTION**

## **02 PREVENTION**

SUMMER CONSIDERATION

ARRIVAL TO SCHOOL

SOCIAL DISTANCING

FACE MASKS

CLEANING & SANITIZING

MONITORING & CONTACT TRACING

BUILDING VENTILATION

TRAINING & ONGOING EDUCATION

## **08 COVID-19 SUSPECTED, CONFIRMED, AND CLOSE CONTACT CASES**

RETURN TO SCHOOL AFTER TESTING, EXPOSURE OR POSITIVE  
CASES - (STUDENTS ONLY)

## **11 INSTRUCTION**

## **15 SCHOOL MEALS**

## **16 TRANSPORTATION**

## **17 ATHLETICS AND ACTIVITIES**

## **18 SOCIAL EMOTIONAL SUPPORT**

## **19 COMMUNICATION AND DISTRICT HEALTH & SAFETY LIASON**

## **20 PARENT AND STUDENT RESPONSIBILITIES**

# INTRODUCTION

In looking forward to the 2020-21 school year, I present to you the **Connecticut Technical Education and Career System's (CTECS) Guide to Reopening**. Enclosed in this guide is information on new procedures, protocols and plans that have been implemented in our efforts to provide the safest learning environment in these circumstances for our students. Our plan was developed following guidelines issued by the Connecticut State Department of Education's (SDE) *Adapt, Advance, Achieve: Connecticut's Plan to Learn and Grow Together* reopening document, and in consultation with local and state health departments.

Please keep in mind that CTECS' Guide to Reopening is based on public health information available at this time. The plan will be revised and adjusted as new guidance from the Connecticut State Department of Education, Connecticut Department of Public Health, Centers for Disease Control and other public health officials is received, or as necessary to best support the health and safety of our students and employees. All updates will be posted online at [cttech.org/coronavirus](https://cttech.org/coronavirus) and shared with our families and employees.

We will make a decision regarding what phase of instruction we will reopen in - full-time in-person, or a hybrid model (a combination of distance and in-person learning) - in the coming days. We will make this decision utilizing public health data at the time. As you will read in this plan, we do have several contingencies should the state of public health worsen. As always, we will make the health and safety of our students and staff our number one priority.

CTECS is prepared to modify our instructional plans to support a partial reopening or to allow for scaling back at a future date if the situation changes. You'll find the details regarding our four separate instructional phases in the Instruction section on page 11. Should CTECS need to scale back in-person instruction, we will prioritize hands-on career technical education (trades) instruction whenever possible.

CTECS recognizes that there is no substitute for in-person instruction when it comes to the quality of students' academic and career technical education learning. In-person school plays an equally important role in our ability to support students' social-emotional needs, including their mental and physical health. We also recognize how disruptive the school closures have been to families trying to maintain regular work schedules and manage household needs, while also facilitating distance learning.

Thank you for being our partner through these unprecedented times.



**Superintendent Jeffrey Wihbey**



# PREVENTION

CTECS has worked closely with the Department of Health and State Department of Education to plan for the safe reopening of schools. In consultation with State and local departments of health, we will continually monitor changes in health data across the state as well as in our school buildings. Our plan has been reviewed and approved by CTECS' Medical Advisor and local health departments.

## SUMMER CONSIDERATION

Please keep in mind that students and staff who travel outside of Connecticut within the two week period just prior to the first day that they return to school may be subject to a **mandatory travel quarantine**. The list of current Affected States is available [here](#).



## ARRIVAL TO SCHOOL

Prior to school arrival each day, please screen your student at home by checking their temperature and determining **if any of the below signs or symptoms of COVID-19 are present**.

- Fever or chills
- Cough
- Shortness of breath or difficulty breathing
- Fatigue
- Muscle or body aches
- Headache
- New loss of taste or smell
- Sore throat
- Congestion or runny nose
- Nausea or vomiting
- Diarrhea

*Students should NOT report to school if they have any over the above symptoms, or their temperature is greater than 100 degrees fahrenheit.*



Upon entering the building all staff, students and visitors will be **screened for any signs of observable illness**, including cough or respiratory distress. Symptom screening may occur via self-reporting, visual inspection, or a symptom screening questionnaire. If necessary, the school nurse will confirm the temperature is below 100 degrees Fahrenheit.

**Students or staff who exhibit symptoms** consistent with COVID-19 will be placed in a room separated from the school population and will remain there until a parent/guardian or responsible party's arrival to pick them up from school.

**All students must arrive at school wearing a face covering or mask.** If a student does not have a face mask, one will be provided.

# PREVENTION

## ARRIVAL TO SCHOOL

Upon arrival and departure, **designated routes for entry and exit will be marked**, using as many entrances and exits as can be supervised appropriately to decrease crowding and disperse student gatherings.

Indoor and outdoor spaces throughout the school will be utilized to **appropriately distance students** at the beginning of the day.

**More information on updated procedures will be sent by your school principal prior to the start of the school year.**

## SOCIAL DISTANCING

Social distancing is one of many layers of mitigating tools being used to decrease transmission of COVID-19. As such, appropriate social distancing strategies will be implemented guided by what is feasible, practicable, and acceptable and tailored to the needs of each school community. Schools will select social distancing strategies based on feasibility given the unique space and needs of the school as recommended by CDC's **Interim Guidance for Administrators of US K-12 Schools and Child Care Programs**. **These strategies may include:**

- Increasing the space between desks.
- Turning desks to face in the same direction (rather than facing each other).
- Maximizing space between the teacher and students during instruction.
- Cohorting students. A cohort is defined as a group or team of students and educators with consistent members that stay together throughout certain periods of the school day.
- Teachers may rotate into the classroom to teach different subjects, instead of student rotations.
- Adjusting traffic patterns in hallways.
- Staggering class dismissal times.
- Schedules developed in a way that will limit student movement throughout the day.
- Outdoor spaces utilized when possible.
- Plexiglass barriers may have been installed for staff members who interact with the public on a more frequent basis. Plexiglass barriers or screens may also separate students (e.g., at tables).
- Individual CTECS schools will determine the location of meal service based on social distancing, physical location, student traffic, space, staffing, etc. Strategies for social distancing during meals will include distanced seating in the cafeteria and utilizing several areas of the school, including outdoor locations if necessary.

# PREVENTION

## SOCIAL DISTANCING

**Visitors will not be permitted** into school facilities unless scheduled to enter, or required by law, or otherwise required by a student's individualized educational plan. Please note that parents/guardians are considered visitors.

Any visit to the school by a parent/guardian for drop-off of student items payment for meals, etc., will take place at a **designated outdoor area**, and delivery facilitated by school personnel. Parents/guardians are encouraged to have students manage these transactions if possible.

CTECS encourages **virtual meetings** between parents/guardians and school staff.

**To reduce congestion in the health office**, staff will be asked to call or radio into the Health Office to request a student visit. The nurse will prioritize the student for a visit and direct them to the well or sick zone areas identified in the Health Office based on symptoms.

**Water fountains and no-touch water bottle fillers will not be available.** Until further notice, students should bring water in clear containers. Students must not share water bottles.

## FACE MASKS

The SDE reopening guidelines **require students to wear face coverings or masks** in order to go to school, with limited exceptions. This requirement is not just for their own safety, but also for the safety of their teachers, peers and families.

**Students are expected to bring their own mask each day** as part of their school uniform. Masks will be supplied if a student forgets theirs or is unable to supply one.

Students who refuse to wear a mask and do not meet any of the allowable exceptions will be **subject to discipline**. Such refusal will be treated as a health and safety violation, similar to not using your safety goggles or tethering systems. A parent meeting will be required.

All face masks must be **worn correctly** and satisfy school dress code requirements. A face covering or mask must completely cover the nose and mouth and be worn even when social distancing is maintained.

**A written notification** from a physician is required in order for the school to permit a medical exemption to the requirement of wearing face coverings/masks.



# PREVENTION

## FACE MASKS

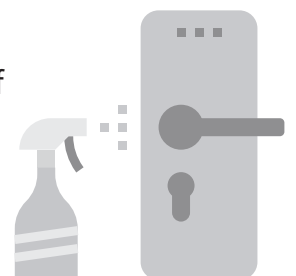
Students and staff **will not be required** to wear face coverings/masks while eating, drinking or during physical education.

**Mask breaks** will be provided as designated by each school.

## CLEANING & SANITIZING

CTECS is implementing the cleaning, ventilation, and sanitization protocols outlined in the DPH Guidance documents: **Guidance for Cleaning and Disinfecting of Schools during COVID-19**, and **DPH Return to Service Guidance for Building Water Systems**. **Specifically:**

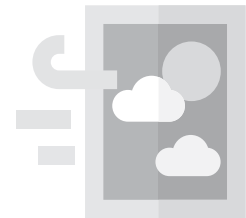
- Routine cleaning will have taken place **prior** to school opening.
- Special attention is being placed to disinfect **high-touch points** daily, including; doorknobs, countertops, handrails, light switches, restroom fixtures, desks, phones, keyboards, etc. Enhanced areas of focus include restrooms, communal spaces, front desk and lobby areas.
- Maintenance staff have completed **cleaning and disinfecting training** from Occupational Safety and Health Administration and Centers of Disease Control.
- Identified and procured **appropriate cleaning and disinfection products** for all schools.
- Identified and procured supplies to **support healthy hygiene behaviors**, including soap, tissues, no-touch trash cans, hand sanitizers (with at least 60 percent ethyl alcohol or 70% isopropyl alcohol for staff and students who can safely use hand sanitizer), and disinfecting wipes.
- All efforts will be made to ensure adequate supplies to **minimize sharing of high-touch materials** (art supplies, equipment, electronic devices, tools, equipment, etc.) to the extent practicable, or limit use of supplies and equipment to one group of students at a time and clean and disinfect between uses.



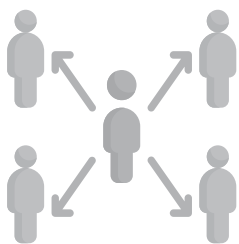
# PREVENTION

## BUILDING VENTILATION

All school building ventilation systems have been assessed and action taken to elevate the **level of filtration** and increase the **frequency of filter changes**.



## MONITORING & CONTACT TRACING



CTECS will actively monitor **staff and student absenteeism** to identify any trends that would suggest spread of illness such as COVID-19.

Class seating rosters, class cohorts and consultation with teachers/staff will be used to identify **close contacts** to COVID-19 cases as needed.

## TRAINING & ONGOING EDUCATION

All CTECS staff members will be required to complete a **safe schools COVID-19 training course**, which includes Personal Protective Equipment (PPE) requirements and safety measures prior to students starting school on September 2, 2020. Substitute teachers will also be required to take the training course.

Professional development from the department of health will be provided to **all culinary and school lunch personnel**.





# PREVENTION

## TRAINING & ONGOING EDUCATION

Principals will determine the best approach to **regularly communicate wellness information** to students and plan to set aside time at the beginning of the school year, as well as scheduling frequent reminders, to review the new policies and protocols.

**Topics include, but are not limited to:**

- **Social distancing;**
- **Hygiene and frequent hand washing and use of hand sanitizer;**
- **Self-screening;**
- **Use of face coverings that completely cover the nose and mouth;**
- **Respiratory and cough etiquette;**
- **Personal behavior and virus transmission; and**
- **Enhanced cleaning/disinfection of surfaces**



During CTE instruction, students may need to share tools, materials or equipment during the course of a school day. CTE programs may need to take unique precautions, such as providing students with gloves and other PPE, minimizing the amount of sharing. Staff and students will be properly trained in the proper cleaning and sanitizing procedures for CTE related tools and equipment. **Every effort (where feasible) will be made available to assign equipment to individual students.**

Signs in multiple languages will be posted in highly visible locations (e.g., school entrances, staff areas, and restrooms) that promote **everyday protective measures.**



# COVID-19 SUSPECTED, CONFIRMED OR CLOSE CONTACT CASE

## SUSPECTED CASE

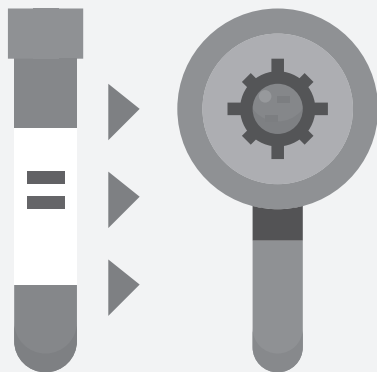


Any students or staff exhibiting COVID-19 symptoms will **immediately be required to wait in an area separate from the school population** until they can be transported home or to a healthcare facility, as soon as practicable.

While separated from the school population, students will be continually monitored to ensure their safety.

Any staff/student who experiences a temp greater than 100 degrees fahrenheit must be excluded from school and return with a note from their healthcare provider or with a documented negative COVID-19 test result.

## CONFIRMED CASE



**If a student tests positive for COVID-19**, parents/guardians are to contact the school principal and school nurse. Information about student illness will be kept in the student's confidential medical record.

In accordance with state and local laws and regulations, school administrators will notify local health officials, staff, and families immediately of any case of COVID-19 while maintaining confidentiality in accordance with the Americans with Disabilities Act (ADA) and Family Education Rights and Privacy Act (FERPA).

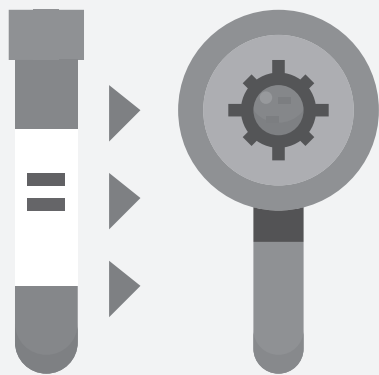
After consultation with local health officials and/or the district Medical Advisor, the Superintendent of Schools will notify the State Department of Education, staff, and families of any school closures and process moving forward.

Continuation of a school program in a distance learning format during a short-term dismissal will be on a case by case basis determined by the CTECS Superintendent.

Where stable classroom cohorts have NOT been utilized, schools will utilize class seating rosters and consultation with teachers/staff to identify close contacts to the confirmed COVID-19 case in all

# COVID-19 SUSPECTED, CONFIRMED OR CLOSE CONTACT CASE

## CONFIRMED CASE



classrooms and on-campus activities. A close contact is someone who has been within six feet of the confirmed case for a prolonged period of time (at least 10-15 minutes) regardless of face covering use. Close contacts will be advised to get COVID-19 testing and should remain quarantined at home for 14 days.

**CTECS will close off areas used by any sick person and will not use again before cleaning and disinfection.**

## CLOSE CONTACTS TO CONFIRMED CASE



**If a student has close contact with an individual who tests positive for COVID-19**, parents/guardians are to contact the school principal and school nurse. A close contact is defined as a person who must have spent at least 15 minutes near an infected person.

Close contacts (household or non-household) of confirmed COVID-19 cases should be sent home immediately and advised to get COVID-19 testing. They should, even if they test negative, remain in quarantine for a full 14 days after the date of last exposure to a COVID-19 positive non-household contact or after the date that COVID-19 positive household member completes their isolation.

No actions will be taken for persons who have not had direct contact with a confirmed COVID-19 case, and instead have had close contact with persons who were in direct contact.

**Those who test positive should not return until they have met Local Health Department criteria to discontinue home isolation.**

***NOTE: If an individual student is required to quarantine, they will be provided the option to transition into distance learning.***

# RETURN TO SCHOOL AFTER TESTING, EXPOSURE OR POSITIVE CASE

## SYMPTOMATIC STUDENTS



**Negative Test:** Symptomatic individuals who test negative for COVID-19 can return 72 hours after resolution of fever (if any) and improvement in symptoms. Documentation of a negative test result should be provided to school administrators.

In lieu of a negative test result, students and staff may return to school with a medical note by a physician that provides alternative explanation for symptoms and reason for not ordering COVID-19 testing.

**Positive Test:** Symptomatic individuals who test positive for COVID-19 can return 14 days after symptom onset OR 7 days after resolution of fever and improvement in other symptoms, whichever is longer.

## ASYMPTOMATIC STUDENTS



**Negative Test:** If testing negative, close contacts to confirmed COVID-19 cases can return a full 14 days after the date of last exposure to COVID-19 positive non-household contact or after the date that COVID-19 positive household member completes their isolation.

**Positive Test:** Asymptomatic individuals who test positive for COVID-19 can return 14 days after their positive test result.

If they test positive, close contacts to confirmed COVID-19 cases can return after completing the required isolation period described above.

# INSTRUCTION

CTECS is committed to **in-person learning** for all students in fall 2020. Our instructional plan follows all guidelines and expectations of the State and maintains health standards in accordance with local and state health departments. Decisions on distance learning versus in-person learning will be based on indicators of the spread and prevalence of COVID-19 in the community and on the physical and operational ability of schools to implement mitigation strategies. Our instructional models may need to be adjusted as a result of changes in the key metrics and considerations that inform our decision-making. We have developed 4 phases to account for a variety of possible situations. **Please note that whether students are receiving instruction in-person or by distance learning, they are expected to attend class during the regularly scheduled school day.**

## PHASE 1

**Full-time in-person instruction**  
**100% student attendance**

**Distance learning will be made available to the following students:**

- Students who have a verified medical reason.
- Students who are isolating or quarantining because of exposure to COVID-19.
- Students whose parent/guardian voluntarily chooses for their child to do distance learning on a temporary basis (**further guidance to follow**). This will not affect the students ability to participate in extracurricular activities.
- Students who live in a household with a person who has high risk of severe illness from COVID-19.

## PHASE 2

**Hybrid Learning**  
**50% or 25% student attendance**

**50% attendance:** In this scenario, 50% of students would physically attend school, while the other half attend virtually, via live streaming from each class.

**25% attendance:** In this scenario, half of the students in trade would attend on an alternating basis, while academics would be entirely virtual.

**Trade:** During hybrid learning, CTECS will prioritize in-person instruction in the trades.

**Academics:** schools may determine that some students who are capable of learning in the virtual environment at a high level may be able to physically attend school less frequently, and remain in a more virtual setting, at the discretion of the Principal.

**Schedule:** Full day schedule, following the school bell schedule. Remote students log into class at the scheduled time.



# INSTRUCTION

## PHASE 3

**Distance learning: students only**  
**0% student attendance**

Staff will continue to report to school, enabling them to collaborate with colleagues and have access to school resources, technology (such as Smartboards), trade equipment, and to ensure students will have face-to-face interactions with their teachers.

**Schedule:** Full day schedule, following the school bell schedule, with students attending academics and trade classes at the scheduled time.

During school closures, all extracurricular activities, athletics, and school-based afterschool programs are canceled.

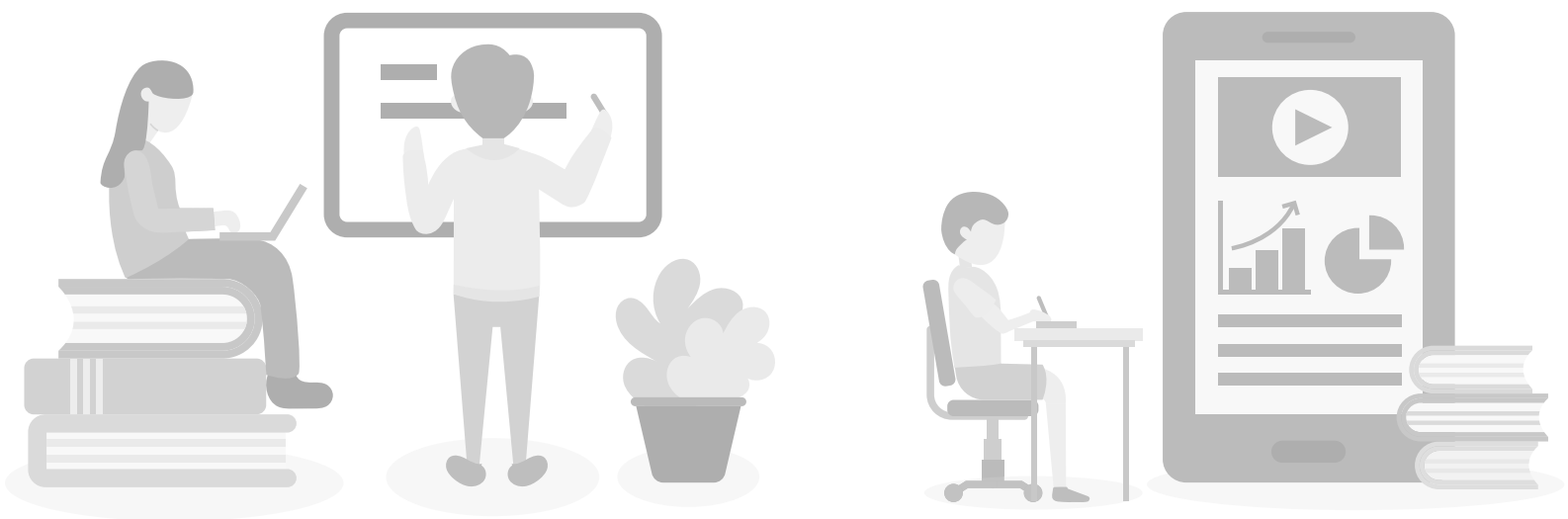
## PHASE 4

**Distance Learning: students and staff.**  
**Schools are closed for physical access to all**

Distance learning for Academics and Trade. Staff would teach virtually from home.

**Schedule:** Full day schedule, following the school bell schedule, with students attending academics and trade classes at the scheduled time.

During school closures, all extracurricular activities, athletics, and school-based afterschool programs are canceled.



# INSTRUCTION

Career Technical Education instruction is maximized when it is delivered in-person through practical experience. CTE programs use a hands-on approach to develop job readiness skills and trade competencies. Many CTE programs require students to develop physical dexterity and motor skills through regular practice over significant periods of time. **As such, whenever possible, CTECS will prioritize in-person trade instruction.**

**In-house production work** (salons, restaurants, etc.) can continue to take place following State of Connecticut guidelines.

**Work-based Learning (WBL) will be allowed on a case-by-case basis** and with approval of the parent/guardian. CTECS will monitor community transmission and collaborate with employers when making WBL decisions.

Physical education, unified arts, and extracurricular activities are an important piece of engaging students in a well-rounded educational opportunity. CTECS will modify these activities to **avoid any increased public health risk** to include individualized activities, no group contact in gym class, and staggered locker room times.

Field trips and off campus experiences will be limited at the start of the school year and require approval of the Superintendent of Schools or designee. **Decisions will be made based on ability to maintain proper distancing and safety expectations.** Virtual field trips will be encouraged.



**Special Education:** students with special needs will continue to work with their case worker to arrange for accommodations and support during in-person and distance learning.

English Learners will receive weekly English Language Development packets, English language development resources, and **face to face meetings with EL teacher during distance learning.** When needed, the district will use a translation service to provide translation, printed updates and materials in additional languages to parents and students.

# INSTRUCTION

The CT Department of Labor has granted a partial exemption of related instruction coursework and applicable On the Job Training (OJT) credit hours for the spring 2020 semester due to the COVID-19 pandemic. The waiver is applicable to students that were in good standing at time of closure and shall be recognized as having been completed for the semester. **Moving forward, the following licensed trade information is important to be aware of:**

- CTECS provides instruction and trains students in competencies; curricula is not hours-based.
- CTECS 9-12 CTE curriculum is accepted by CT-DOL based on the competencies we teach and that equates to the predetermined amount of hours set forth for each apprenticeship trade.
- When a student receives a CTECS diploma with the shop they graduated from on it, then they are privy to all the benefits that allows. In the licensed trades case, this would equate up to 720 hours of related instruction towards an unlimited journeypersons apprenticeship in each of their trades.
- With regard to the Public Health trade areas: The CT Department of Public Health is giving us the ability to count distance learning for hours, but only during these difficult times, and as long as it is approved by us, and follows the guidelines of the curriculum we have set up.
- It is also important to note that CTE Curricula is scaffolded; meaning that basic competencies are taught and then built upon. Students, especially upperclassmen, have been instructed on these foundational skills and are currently building upon these through the digital delivery format. They have the prior knowledge to continue and make connections to new learning.



# SCHOOL MEALS

School breakfast and lunch will be provided for students similar to a **grab-and-go style**. Menu information can be found on the **district website**.



The food exchange will be conducted in a manner consistent with **all public health and safety guidelines** for social distancing.

Individual CTECS schools will determine the location of meal service **based on social distancing, physical location, student traffic, space, staffing, etc.**

Strategies for **social distancing during meals** will include distanced seating in the cafeteria and utilizing several areas of the school, including outdoor locations if necessary.

Students will be allowed to **remove masks** when eating or drinking.

All cafeteria staff are **required to wear face masks**.



# TRANSPORTATION

**Parents are encouraged to provide transportation** in an effort to provide social distancing. Otherwise, it will be made available by sending towns where students cannot be transported by their guardian and where it is required as part of an individualized education program or otherwise as required by law.

CTECS will coordinate with sending towns to ensure that the most recent state guidelines are being followed to **ensure the health and safety of our students**. Protective strategies for transportation should align with the tiered system established by state health authorities. **In other words, the lower the transmission risk, the fewer the restrictions for transportation.**

Students who receive **public transportation tokens** from their school will continue to do so. However, parents will receive an opt-out form if they no longer wish to receive these tokens.





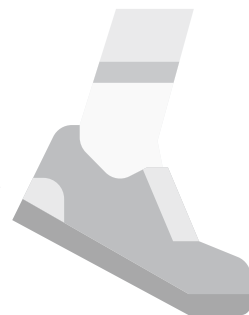
# ATHLETICS AND ACTIVITIES

## ATHLETICS

The Connecticut Technical Education and Career System will follow all CIAC (Connecticut Interscholastic Athletic Conference) guidelines for high school sports after approval of such activities by the Superintendent of Schools. **The full CAS-CIAC guidelines can be found [here](#).** Sports will resume in the fall so long as public health data supports the return to such activities.

### CIAC athletic guideline overview:

- Any consideration of returning to physical activity and athletic competition must adhere to all requirements set forth under the executive orders of Governor Lamont, account for the health and safety of all participants, and equitably provide opportunities for all Connecticut student/youth-athletes.
- Cloth or disposable face coverings should be worn when not engaging in vigorous activity.
- All staff and students are required to self-screen for any observable illness, including cough or respiratory distress, and to confirm temperature below 100 degrees Fahrenheit. The coach or activity supervisor must verify that each participant has self-screened upon arrival.
- As student/youth-athletes return to physical activity, a system of contact tracing will be established in the event that a participant tests positive for COVID-19.
- Schools will consider social distancing requirements when scheduling contests and events for the fall. Social distancing (as required by state or local health department) will be maintained during transportation.
- Each CTECS school has established a COVID-19 athletic advisory committee that will meet regularly before and during each athletic season to ensure guidelines are being followed and establish best-practices for the school location.



## OTHER SCHOOL EXTRACURRICULAR ACTIVITIES

After school clubs, activities, and events will be approved in advance by the Superintendent of Schools. Approval will be based on the ability to meet the safety expectations of students and staff members involved.

In general, activities will be limited to those that do not involve physical contact with other students or equipment until advised otherwise by state/local public health officials.

# SOCIAL EMOTIONAL SUPPORT



Each student will receive a nationally recognized virtual **Social and Emotional Learning screening** as school re-opens. Information gained through this process will inform collective support efforts by school teams.

School Support Services staff have established a school-based plan for delivery of lessons to support **socio-emotional well-being** and provide strategies for navigating the effects of social distancing and school closures.

School teams that include the school counselor, school social worker and school psychologist meet on a **weekly basis** to identify and monitor any students in need of social emotional support.

**Students identified as needing additional support** will have daily check-ins with school support staff. **Students who are not in need of emergency mental health services** will be offered services at school, such as small group sessions if appropriate. **Students in need of immediate and urgent mental health resources** will be directed to appropriate local resources.



**Local and national resources** that could provide remote support, printed resources and useful activities will be made available to staff, families and students.

**Should you have questions or concerns about your students mental health please contact your school's counselor.**



# COMMUNICATION AND DISTRICT HEALTH & SAFETY LIAISON

The Superintendent of Schools has appointed **John Woodmansee** to serve as **COVID-19 Health & Safety Compliance Liaison and COVID-19 Response Leader**. The Liaison, along with the Superintendent of Schools, will engage with students, parents, faculty, staff, and administrators to answer questions about the health & safety requirements set out in this document and address questions about compliance. They will support the implementation of these requirements, as well as the implementation of other school health & safety measures relating to COVID-19 and any additional guidance provided by the State of Connecticut.



**Contact: 860-754-8765**

**John.Woodmansee@ct.gov**

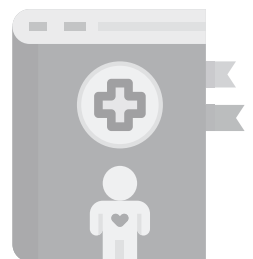
Critical information regarding plans, policies, protocols, school closures or health data changes will come from the Superintendent or designee. Updates will be provided on an as-needed basis.

The primary and immediate form of communication will take place through **ParentSquare** (email, text, and phone) - the district's school to home communication platform. Updates will also be shared on the school and district COVID-19 resource page, [cttech.org/coronavirus](https://cttech.org/coronavirus); and distributed on the district's social media platforms, facebook, twitter and Instagram, **@CTTechHS**. Other forms of communication may include **building signage, press releases and mailed letters if necessary**.

CTECS will continue to utilize online an feedback form (<https://docs.google.com/forms/d/e/1FAIpQLSd9Ab0MvQ16OtvGFWHpwI68fLLPknDhE5DD09-6LU5pBAFi9w/viewform>) to answer individual concerns, or address questions of global concern.

**Regular safety reminders about the actions school communities can take to stop the spread will be in place.** Signs will be posted in highly visible locations (e.g., school entrances, staff areas, and restrooms) that promote everyday protective measures and provide instruction related to social distancing, properly washing hands, cleaning, when to stay home, signs and symptoms of COVID-19, and properly wearing and removing a face masks.

Each CTECS school will share with their school population a contact list by topic. Schools will also publish **their COVID-19 Health and Safety Compliance Liaison**.



# PARENT & STUDENT RESPONSIBILITIES

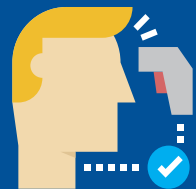


## STAY HOME WHEN SICK.

Students must stay home if they are feeling sick, have any symptoms consistent with COVID-19, or have had close contact with a person diagnosed with COVID-19.

## SELF-ASSESS.

We expect all students to self-screen at home before the school day by checking their temperature and determining if any new or worsening signs or symptoms of COVID-19 are present (see page 2 for signs and symptoms). Check to ensure temperature is below 100.0 degrees Fahrenheit.

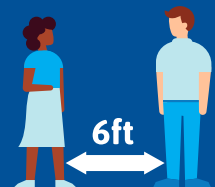


## WEAR A MASK.

The State of Connecticut guidelines for returning to schools and Connecticut Technical Education and Career System policy require that all students must wear face coverings or masks that completely cover the nose and mouth while inside the school and on the bus. Schools will have back up disposable masks for staff and students who forget them. A mask or face covering is considered to be part of a school uniform and/or student dress code.

## PRACTICE SOCIAL DISTANCING.

Social distancing helps reduce the transmission of the virus. Everyone in the schools must maximize social distancing to the greatest extent possible. Students are expected to practice social distancing when entering and exiting the building, in classrooms, and moving throughout the school.



20s



## WASH YOUR HANDS.

Students must engage in frequent hand washing or sanitizing upon arrival, before and after meals, after bathroom use, and after coughing or sneezing.





CONNECTICUT TECHNICAL EDUCATION  
AND CAREER SYSTEM

[CTTECH.ORG/CORONAVIRUS](https://CTTECH.ORG/CORONAVIRUS)

